

## Front End Gauge

### Description

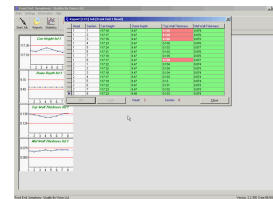
In today's competitive environment, there is constant pressure on beverage can manufacturers to decrease material thickness and cut costs. Controlling the critical parameters of the cans is essential. Correct body wall thickness as well as trimmed can height can guaranty a problem free finished can. A proper dome depth is critical for sufficient pressure performance. The Front End gauge is an ideal tool for small and medium sized DWI can-makers who need to check the cans coming out of the body makers in order to ensure quality of the finished can.

The Front End Gauge is a semi-automatic system that utilizes state-of-the-art technology to quickly and simultaneously detect the values of Trimmed Can Height, Dome Depth, Mid Wall Thickness and Upper Wall Thickness at as many different sections around the can as is required. The user places the can inside the unit and closes the hatch. The system then automatically detects all four parameters simultaneously before rotating the can and automatically continuing on to the next section. Each section takes approximately a second and a half to measure!

The system is designed to be highly cost effective, and is priced competitively for low volume production environments and smaller to mid-sized can makers for two piece "drawn and wall ironed" (DWI) aluminum or steel.



The Front End Gauge



Front End Measurement Screen

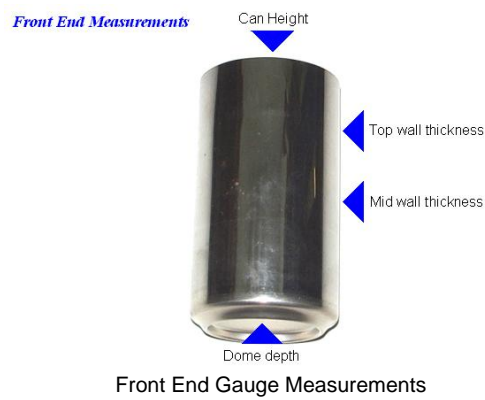
## Features

### Features

- Inexpensive solution for smaller and mid-sized can makers.
- Rugged construction for the factory floor.
- Built-in reporting, data collection and SPC software.
- Easy to calibrate.

### Measures

- Trimmed Height
- Dome Depth
- Mid-wall thickness
- Upper-wall thickness



## Specification

<b>Resolution</b>	Dome depth : 0.01mm Height : 0.001mm Wall thickness : 0.001mm
Can types	Beverage: Steel or Aluminum
Can sizes	Can Body: 211 Can sizes: 330-500ml cans
Cycle time	12 seconds for 8 samples
Units	mm, inches, microns
Data output	SPC, reports
Weight	18 Kg

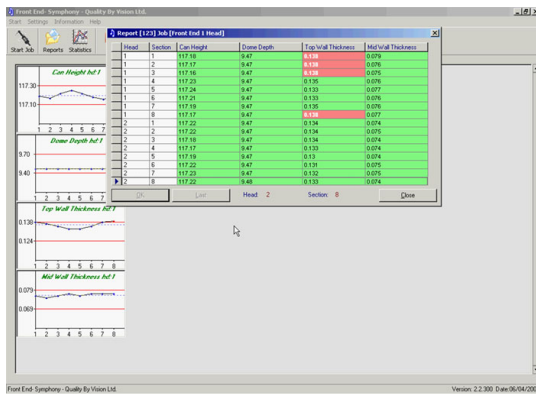
<b>Resolution</b>	Dome depth : 0.0005" (5 tenths) Height : 0.00005" (1/2 a tenth) Wall thickness : 0.00005" (1/2 a tenth)
Can types	Beverage: Steel or Aluminum
Can sizes	Body: 211 Can sizes: 12-16oz cans
Cycle time	12 seconds for 8 samples
Units	mm, inches, microns
Data output	SPC, reports
Weight	40 lbs

## Pictures

# Front End Gauge



The Front End Gauge



The Measurement Screen



Loading a Can in to the Front End Gauge



Removing a Can from the Gauge