

SEAMetal 9000 SD - Standard definition seam test evaluation - Aerosol

Description

The SEAMetal SD Aerosol is a double seam inspection system for aerosol cans. This is a destructive system, which requires cutting a section of the can in order to ensure that the double seam is hermetically sealed and will not leak. This test can be done once or twice a shift, and utilizing statistical analysis and trends, operators can determine if there are problems which many need correcting or further investigation.

A recent trend has led aerosol companies to the false assumption that they would have to increase their double seam evaluation frequencies. However, if you evaluate every can that will not help you produce even one can better - you will just have to stop the line more frequently...

This version of SEAMetal is easy to learn and the most **user-friendly** in the industry!

So, high accuracy, high resolution, fast and repeatable double seam evaluation systems are now needed more than ever.

SEAMetal SD is the third generation of double seam test equipment from Quality By Vision. The company has never stopped improving and developing this system since 1993, when it produced the world's first computerized fully automatic double seam test system: SEAMetal 9000X.

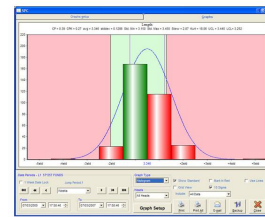
This latest system introduces an integrated High Definition camera, providing an unprecedented look at the aerosols can's double seam. You can now see the image better and get a much more accurate measurement!

The software runs under Windows™ operating systems (including Windows 7!).

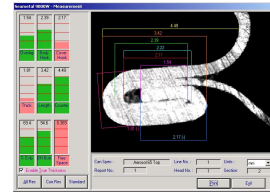
In third party customer GR&R testing, this system was found to have "world class" GR&R ratings!



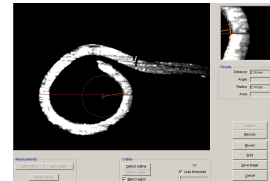
Optical Unit and Adaptor



Easy to use SPC system



Double Seam of the Top side



Ring measurement

Features

Key benefits

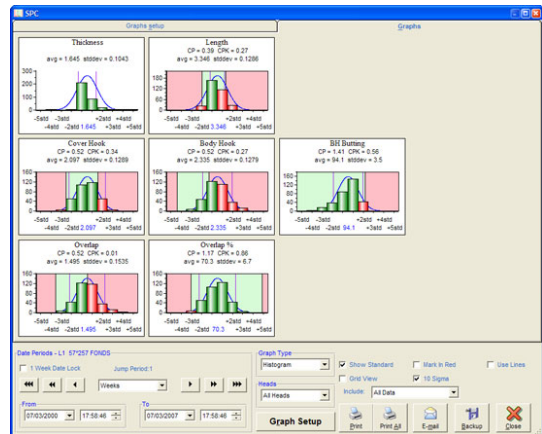
- Low cost!
- Standard definition images!
- High GR&R
- Flexible and customizable
- Flexible reporting & SPC statistics (no need for PhD to understand!)
- Great technical support!
- Fantastic picture quality

Features

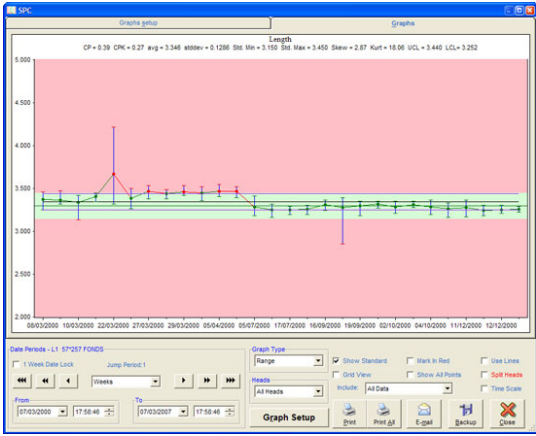
- Each measurement can be measured automatically (less than 1 second per image), manually or configured to use an external caliper or gauge.
- Centering device ensures image is ideal and blocks unwanted light.
- Free SPC system, easy to use, easy to understand, great graphics, supports drilldown directly from SPC graphs!
- Tight integration with Excel for automatic, customizable reports!
- True thickness option for accurate double seam thickness analysis, **without requiring external calipers or gauges!**
- Adaptive detection algorithm - improves accuracy by training detection system with hard-to-detect double seams!
- Multilingual! Translations available to most languages!
- Network support - allows secure access to other SEAMetal HD systems through the network, as well as remote report viewing through local and remote network!
- Customizable reports!
- Supports rechecks - in situations where seamer adjustments were performed.
- Supports undo to avoid operator mistakes!
- Communicates with any SPC data collection system!
- Runs under Windows 2000/XP™.
- SEAM-explorer™ allows R&D teams to inspect any radius, angle, distance or area within the double seam!
- [External gauge support](#) (e.g., can height, flange width, double seam thickness, double seam length and more!).
- Optical unit is portable, complete with portable saw!
- CE certified!
- Pre-focused, Pre-calibrated.
- Optional gauge attachments (e.g., Countersink gauge, thickness gauge).
- Competitive upgrades for seam inspection systems from other manufacturers!



The seam - close up.



SEAMetal's SPC software - free and simple

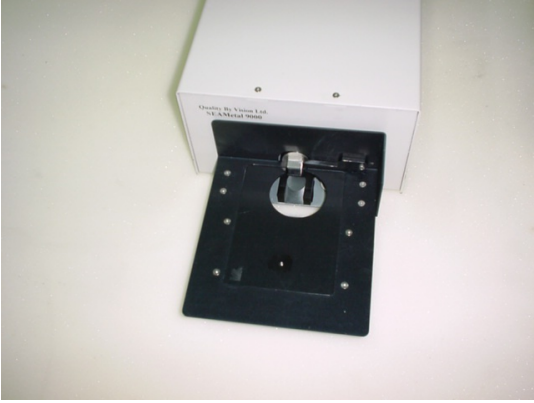


X-bar graphs

Specification

Frame width	6.2 mm
Resolution (SD)	10 microns
Interface:	USB2
Table	Adaptor for each can diameter
Optical units:	Call for details

Frame width	6.2 mm
Resolution (SD)	10 microns
Interface:	USB2
Table	Adaptor for each can diameter
Optical units:	Call for details



Aerosol Optical Unit