

PET Blow Molding Insert Inspection System

Description

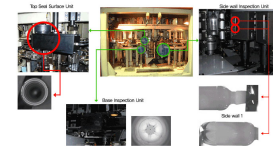
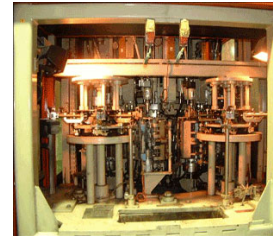
The P&S 21SB system is installed inside the SBO stretch blow molding machines.

The system consists of cameras and illumination inside the 10 to 16 SBO models, which perform all the inspection tasks.

For SBO model 10, TSS and bottom are inspected at the outer gripper wheel point. For SBO model 16, TSS, bottom, and sidewall are inspected at outer gripper wheel point.

The sidewall cameras in out gripper wheel may be installed depending on the consumers product size - using between 2 and 4 cameras. In order to eject defective bottles, the unit utilizes the ejector that is already installed in the SBO.

This system is designed to provide the same excellent quality at around 1/3rd the price of a standalone system!



PET Blow Molding Insert Inspection System

Description

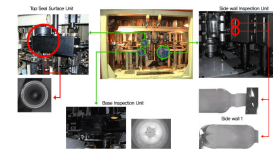
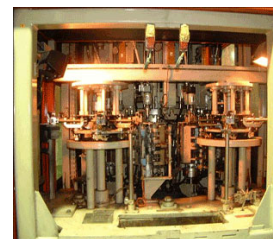
The P&S 21SB system is installed inside the SBO stretch blow molding machines.

The system consists of cameras and illumination inside the 10 to 16 SBO models, which perform all the inspection tasks.

For SBO model 10, TSS and bottom are inspected at the outer gripper wheel point. For SBO model 16, TSS, bottom, and sidewall are inspected at outer gripper wheel point.

The sidewall cameras in out gripper wheel may be installed depending on the consumers product size - using between 2 and 4 cameras. In order to eject defective bottles, the unit utilizes the ejector that is already installed in the SBO.

This system is designed to provide the same excellent quality at around 1/3rd the price of a standalone system!



Specification

Specification