

## Empty glass bottles: Rotary whole surface Inspection system

### Description

P&S 21RG is a reliable and accurate rotary inspection system, which automatically inspects damage, flaws, external substances (bottom and sidewall of bottle), and uncleanness in an empty bottle.

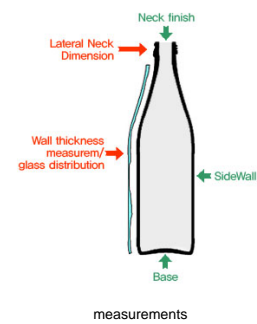
Until recently, this inspection had to be performed by an actual person, by hand. However, this high-tech system performs this operation automatically.

The system inspects units safely using a star wheel gripper during the transfer progress of the bottles. It also provides an infeed starwheel which enables operation in limited space.

The star wheels located at the outlet sorts the bottles and sends it to 2 conveyors.



PS-21RG



## Features

### Features

- High rate of flexibility and compatibility:  
(Height adjustment up to 100mm and , aimeter adjustment between 120mm to 200mm.)
- Easy operation, high durability.
- High resolution CCD increases accuracy and reliability of the inspection.
- Use of high resolution CCD cameras detects defects over 1mm at a rate of 99% or better.
- Automatic rejection system Gripper.
- Statistical management of quality through synchronized reports.

### Benefits

- Rotary machine type with vacuum suction system - provides stable inspection operation for long periods of time.
- Uses high resolution CCD camera to improve inspection accuracy.
- Important production data, parameters, rejection and defect rates, malfunctions stored for later use.
- Use of high intensity LED stroboscope illumination extends the service lifespan of the unit.
- Operation is done via touch screen with password protection.
- Self monitoring system ensures the system is operating properly.

### Technical information

- High performance Industrial PC for auditing and processing
- On-line control for container tracking
- PLC for drive and control tasks
- Runs on Windows 2000/XP OS
- Touch screen LCD

### Camera and illumination

- Cameras range from VGA to 1.3M resolution
- Analog and Digital cameras
- CCD (CMOS optional)
- Digital image process technology is proprietary
- High performance LED and controller
- consistent illumination of objects
- low heat
- long half-life
- Low power, low operating costs



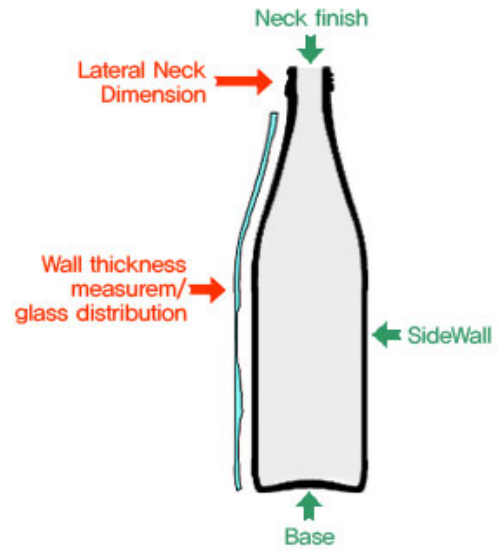
## Specification

<b>Container</b>	Glass bottle in varrous fields
<b>Capacity</b>	Max 36,000 BPH
<b>Inspection unit &amp; Accuracy</b>	Sealing surface particles:min 95% detectable for 2~3mm Base particles:min 98% detectable for 2.0 x 2.0mm Sidewall particles:min 95% detectable for 2.0 x2.0mm
<b>Utilities</b>	3Phase 3Wire, 220V, 60Hz
<b>Air pressure</b>	4kg/cm, 0.1Nm <sup>3</sup> /min
<b>Dimensions</b>	1,800 X 3,000 X 2,400mm (W x D x H)
<b>Weight</b>	Approx : 3,000 kg
<b>Container</b>	Glass bottle in varrous fields
<b>Capacity</b>	Max 36,000 BPH
<b>Inspection unit &amp; Accuracy</b>	Sealing surface particles:min 95% detectable for .08" ~ .12" Base particles:min 98% detectable for .08" x .08" Sidewall particles:min 95% detectable for .08" x .08"
<b>Utilities</b>	3Phase 3Wire, 220V, 60Hz
<b>Air pressure</b>	4kg/cm, 0.1 Nm <sup>3</sup> /min
<b>Dimensions</b>	70.8" X 118.1" X 94.5" (W x D x H)
<b>Weight</b>	Approx : 6,614 lbs

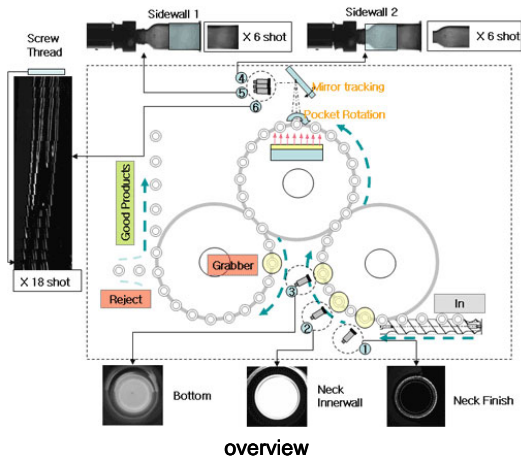
**Pictures**



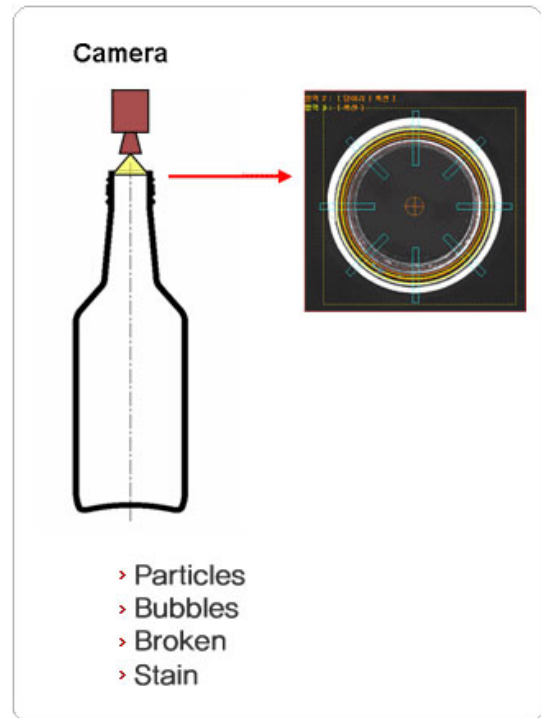
PS-21RG



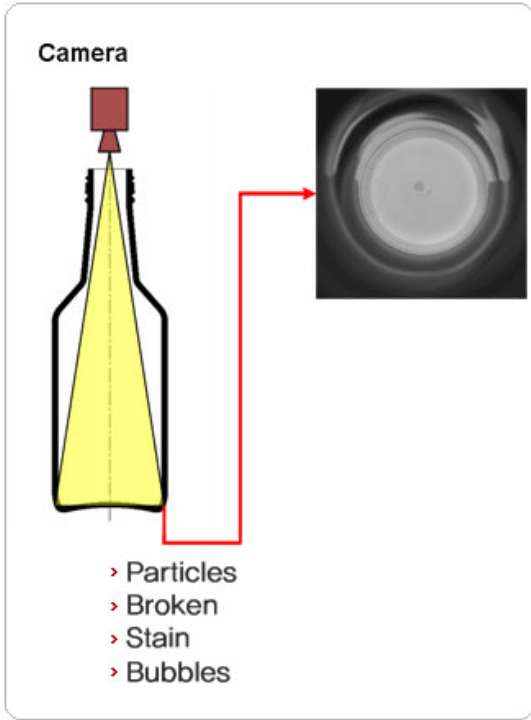
measurements



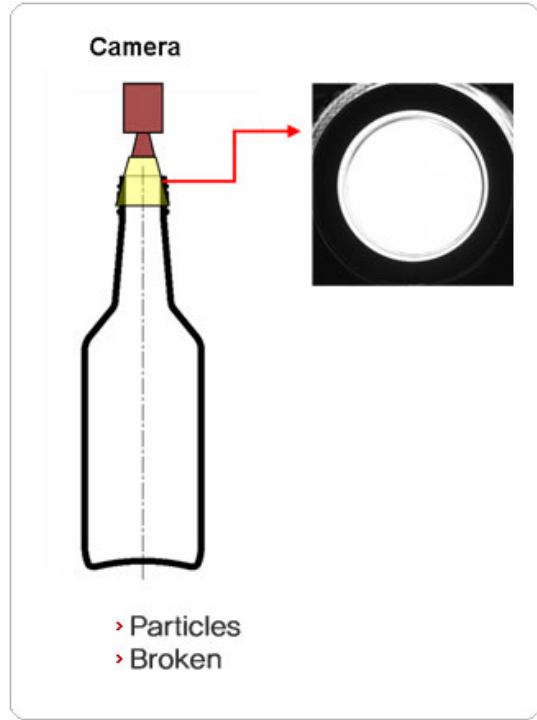
overview



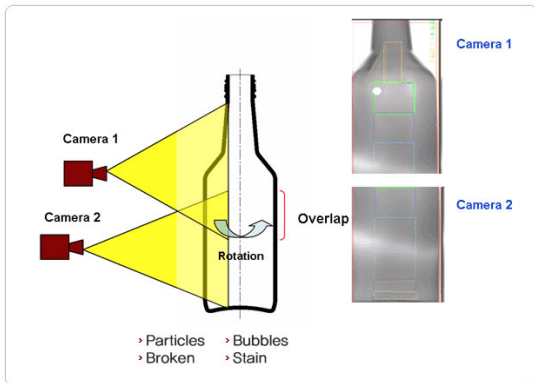
sealing surface



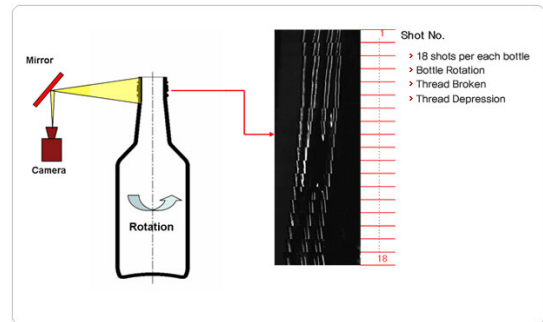
bottom



inner thread



side wall



screw thread