

Cap Inspection System

Description

The P&S-21C Cap Inspection system is a high tech unit for detecting no cap, cocked cap, tear in skirt, tear in bridge, vertical crack, no skirt and fill level after the capping machine on the conveyor system.

The fill level detection is optional.

The unit can be adjusted by the operator on the line, in order to convert the unit for multiple bottle sizes.

- Easy height adjustment ranging from 100ml to 2000ml bottle sizes.
- Optional check for aluminum, Steel and Plastic Caps.
- Flexible integration into existing line.
- Optional servo eject



Cap Inspection System

Cap Inspection System

Description

The P&S-21C Cap Inspection system is a high tech unit for detecting no cap, cocked cap, tear in skirt, tear in bridge, vertical crack, no skirt and fill level after the capping machine on the conveyor system.

The fill level detection is optional.

The unit can be adjusted by the operator on the line, in order to convert the unit for multiple bottle sizes.

- Easy height adjustment ranging from 100ml to 2000ml bottle sizes.
- Optional check for aluminum, Steel and Plastic Caps.
- Flexible integration into existing line.
- Optional servo eject



Cap Inspection System

Cap Inspection System

Description

The P&S-21C Cap Inspection system is a high tech unit for detecting no cap, cocked cap, tear in skirt, tear in bridge, vertical crack, no skirt and fill level after the capping machine on the conveyor system.

The fill level detection is optional.

The unit can be adjusted by the operator on the line, in order to convert the unit for multiple bottle sizes.

- Easy height adjustment ranging from 100ml to 2000ml bottle sizes.
- Optional check for aluminum, Steel and Plastic Caps.
- Flexible integration into existing line.
- Optional servo eject

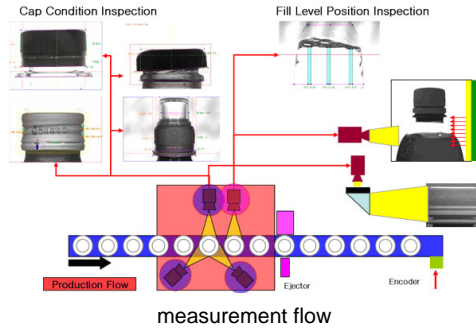


Cap Inspection System

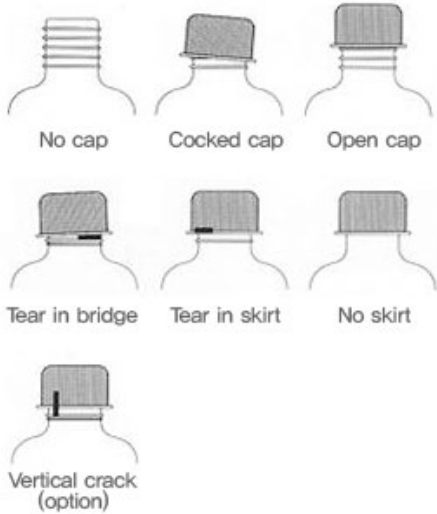
Pictures



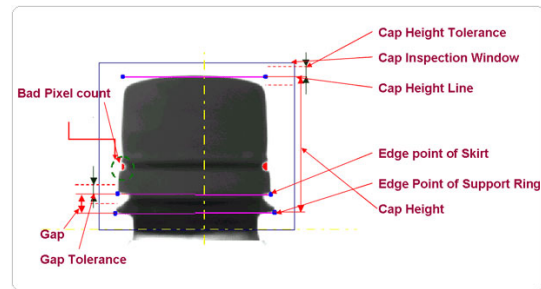
PS-21C



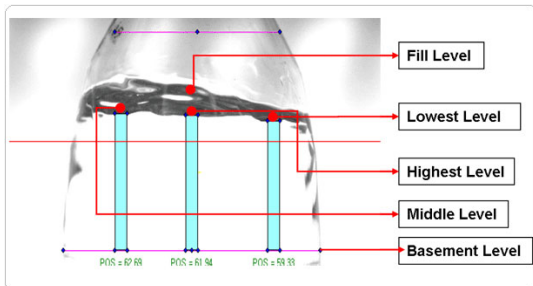
Example of detectable defect



list of potential defects



cap condition measurements (2-4 cam)



fill level measurement