

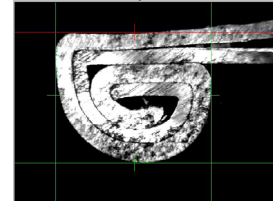
## SEAMetal - Double and Triple Seam Gauge for Pails, Drums and Large Cans

### Description

The SEAMetal system is the most repeatable and accurate seam measurement system in the food, beverage and aerosol industries. Using a modified optical unit with a large sample table and large optical frame and specially designed software, the SEAMetal system can also accurately measure all internal and external seam parameters for double and triple seams on general line cans, pails, drums, paint cans and even oil filters with double and triple seams.

The system provides fully automatic detection of all triple seam parameters, including seam thickness and length / height, overlap, body and cover hook and even body and can plate thickness. Results appear on the seam image in less than a second, the software saves these results in a backed up database and saves the seam images, so the pail can be discarded at the end of the measurement. You won't need to waste valuable storage space on seam chimes or can samples.

You can later print reports and SPC statistics for customers or share them with colleagues and other plants, with no additional software necessary.



Triple Seam



Paint Pail on a SEAMetal Optical Unit

## Features

Triple seam, pail, drums - Key benefits

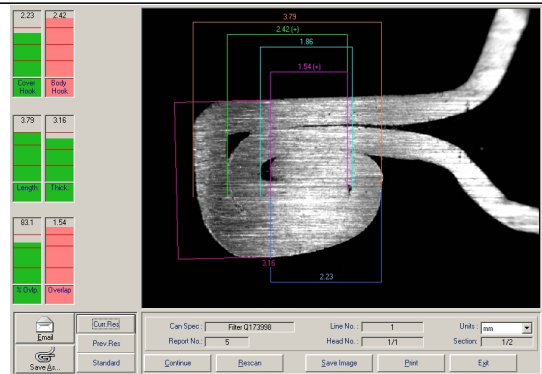
- Safe, repeatable measurement
- Seam images and measurement results are automatically saved to computer
- High GR&R rating
- Flexible and customizable
- Flexible reporting & SPC statistics
- Excellent technical support
- Fantastic picture quality

### Features

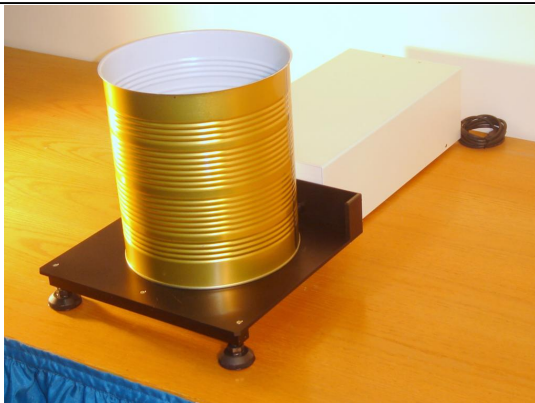
- Each measurement can be measured automatically (less than 1 second per image), manually or configured to use an external gauge or micrometer
- Large sample table ensures image is ideal and blocks unwanted light
- Free SPC system, easy to use, easy to understand, great graphics, supports drilldown directly from SPC graphs!
- Tight integration with Excel for automatic, customizable reports!
- True thickness option for accurate double seam thickness analysis, **without requiring external calipers or gauges!**
- Adaptive detection algorithm - improves accuracy by training detection system with hard-to-detect double and triple seams!
- Multilingual! Translations available to most languages!
- Network support - allows secure access to other SEAMetal HD systems through the network, as well as remote report viewing through local and remote network!
- Customizable reports!
- Supports rechecks - in situations where seamer adjustments were performed.
- Supports undo to avoid operator mistakes!
- Communicates with any SPC data collection system!
- Runs under Windows™
- SEAM-explorer™ allows R&D teams to inspect any radius, angle, distance or area within the seam!
- [External gauge support](#) (e.g., can height, flange width, double seam thickness, double seam length and more!).
- Optical unit is portable, complete with portable saw!
- CE certified!
- Pre-focused, Pre-calibrated.
- Optional gauge attachments (e.g., Countersink gauge, thickness gauge).
- Competitive upgrades for seam inspection systems from other manufacturers!



SEAMetal Optical Unit for Seam Chimes



Oil Filter Double Seam measured with SEAMetal



Large Food can on SEAMetal Optical Unit



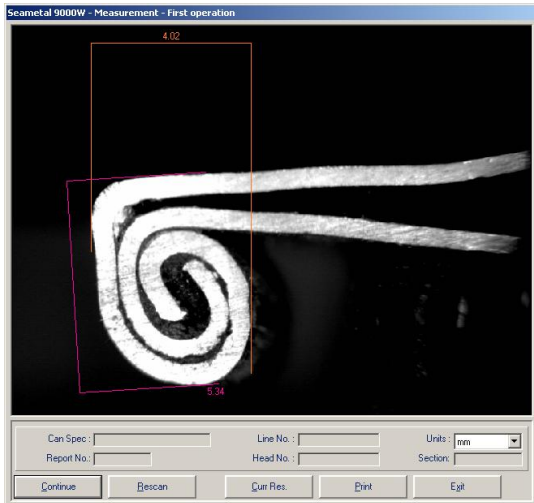
A Triple Seam Cut

## Specification

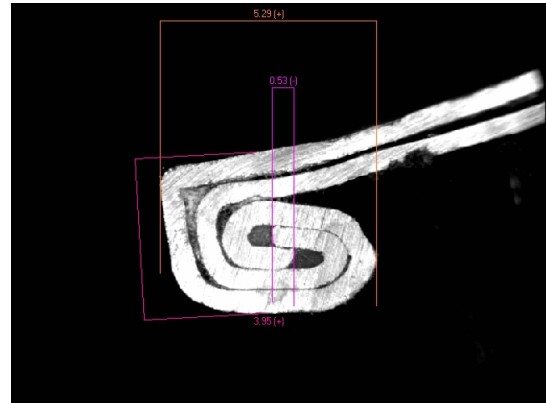
<b>Resolution</b>	10 microns or better	
<b>Case</b>	Stainless Steel	
<b>Interface</b>		USB2
<b>Centering device</b>	Variable (depending on can type)	
<b>Optical unit</b>	Large frame, large sample table	

<b>Resolution</b>	0.0004" or better	
<b>Case</b>	Stainless Steel	
<b>Interface</b>		USB2
<b>Centering device</b>	Variable (depending on can type)	
<b>Optical unit</b>	Large frame, large sample table	

## Pictures



1st Operation Triple Seam



2nd Operation (finished) Triple Seam



SEAMetal Optical Unit with Large Sample Table