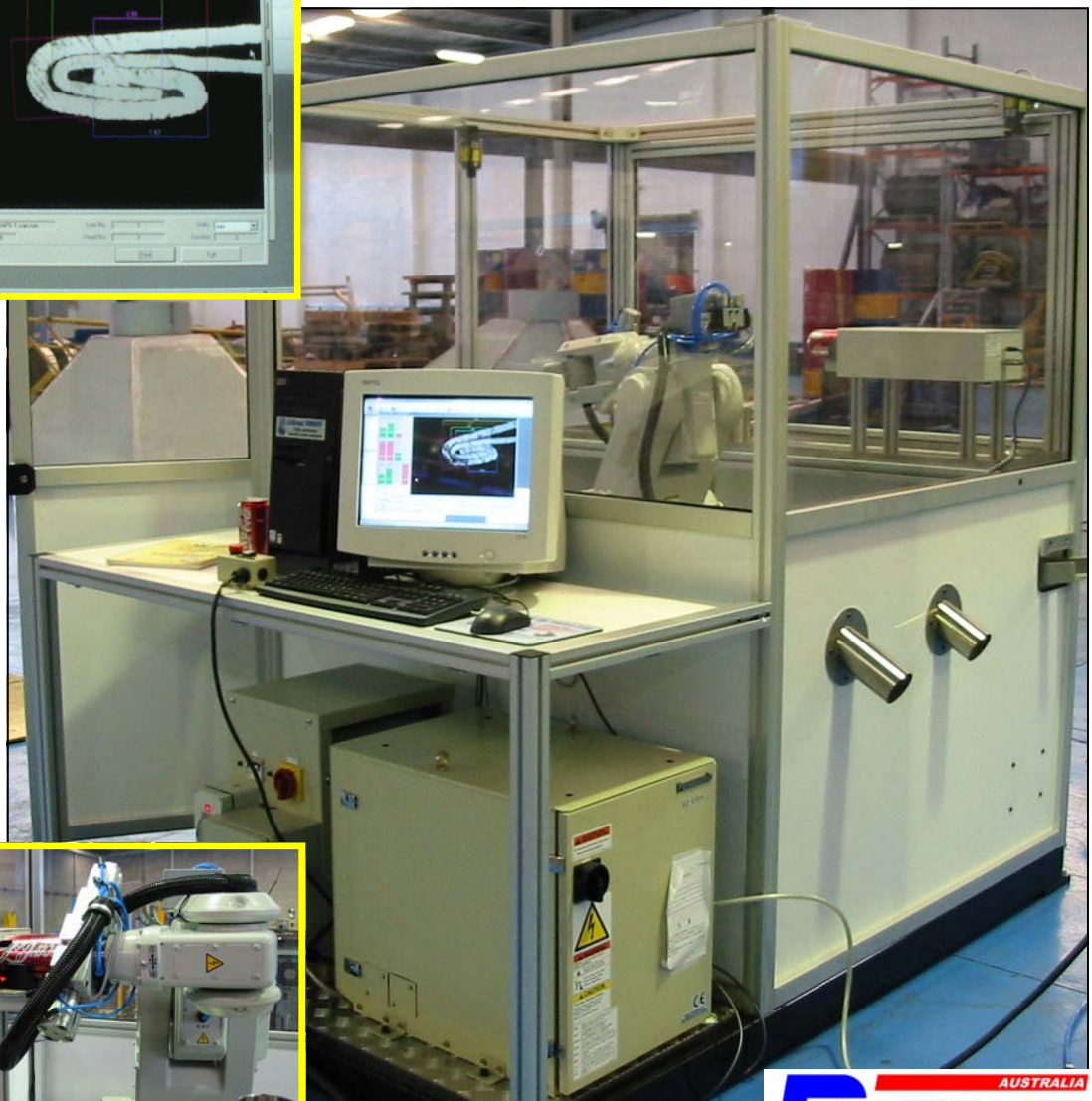
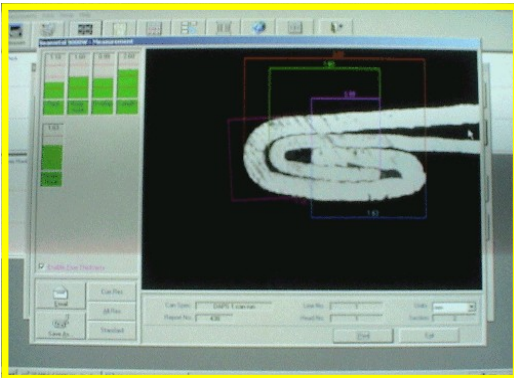


A . S . I . S .

Automated
Seam
Inspection
System

WORLD'S FIRST - FULLY AUTOMATED
SEAM INSPECTION SYSTEM

- Compact turn-key test cell
- Stand alone or on-line
- Fully flexible robotic platform
- High accuracy/resolution
- Precise repeatability
- Simple to use
- Safe operation
- Cost efficient



DGPS AUSTRALIA
Data Acquisition & Processing Systems



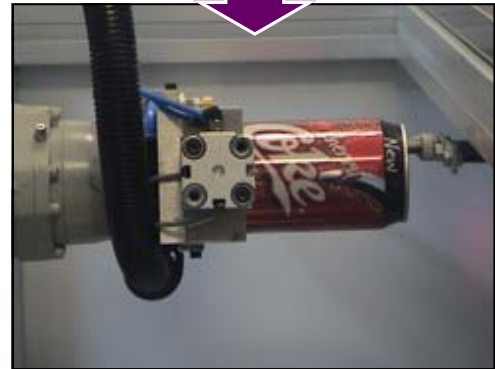
ASIS - FULLY AUTOMATED SEAM INSPECTION SYSTEM

Precision Automated Process

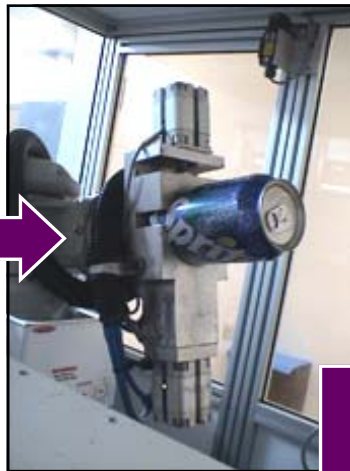
STEP 1
Load cans
into chute



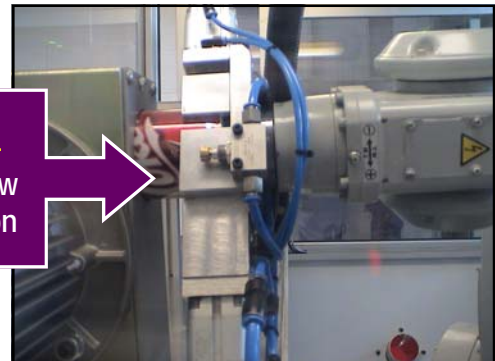
STEP 2
ASIS locates tab



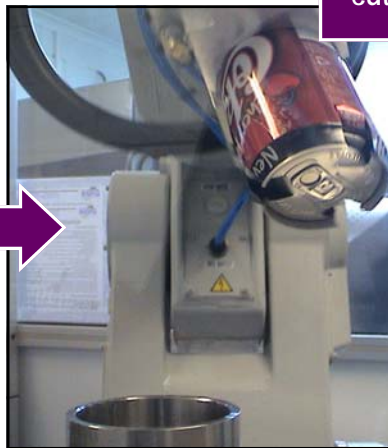
STEP 3
Empty can



STEP 4
Carbide saw
cuts section



STEP 5
Crimp
sections



STEP 6
SEAMetal analysis



Robotic Handling System:

- Fully flexible platform, prevents obsolescence
- Unparalleled reliability and uptime
- Strong local support in ANY country
- Robust technology
- Precision placement
- Ease of incorporating further gauges or processes
- Operations within cell or on-line

ASIS - FULLY AUTOMATED SEAM INSPECTION SYSTEM

ASIS Analysis System

- **Automated Material Handling System**
- **Rapid and Complete Can Drain**
- **High Speed, Clean-cut Saw**
 - High section definition
 - Tungsten carbide blades (beverage only)
 - Minimizes distortion
 - 1,2 or 3 section cuts
 - Seam cleaning
- **Section Crimping**
- **Precision Can Placement**
 - Precise & repeatable can placement within 0.1 mm
 - No adjustment required
- **QbyV SEAMetal 9000™ HD Analysis System**
 - Full QbyV functionality
 - SEAMetal V5.0 software system
 - Less than 0.0002" (5 micron) resolution
 - Powerful adaptive detection algorithms
 - Automated measurements
 - True thickness measurement
 - Image save, report generation, archiving
 - Multilingual
- **Interactive Can Sorting**
 - OK and Reject sorting and binning
- **Low Maintenance**
 - Low running costs
 - Long life saw blades
- **Unparalleled System Flexibility**
 - Simple robot programming
 - No restrictions, never obsolete

SAFETY

- Clean, camera based vision system (no harmful X-rays)
- Test cell interlocks
- Bump sensors
- Dual E-stops



OPTIONS

Measurement Options (others available):

- Brix & Carbonation
- Can Height, factory finished.
- Flange Width
- Bead Depth/s
- Seam Thickness.
- Countersink.
- End first bead height etc..

DISTRIBUTED BY:



DAPS Australia Pty. Ltd.

281 Wellington street,
Collingwood. Vic. Australia. 3066.
Phone: + 61 3 9415 9966.
Fax: + 61 3 9415 1556.
Email: vmessina@daps.com.au



Quality by Vision Inc

92 Main street,
Keyport, NJ 07735 USA.
Phone: (732) 888-3399
Email: usa@qbyv.com
Web: www.qbyv.com