

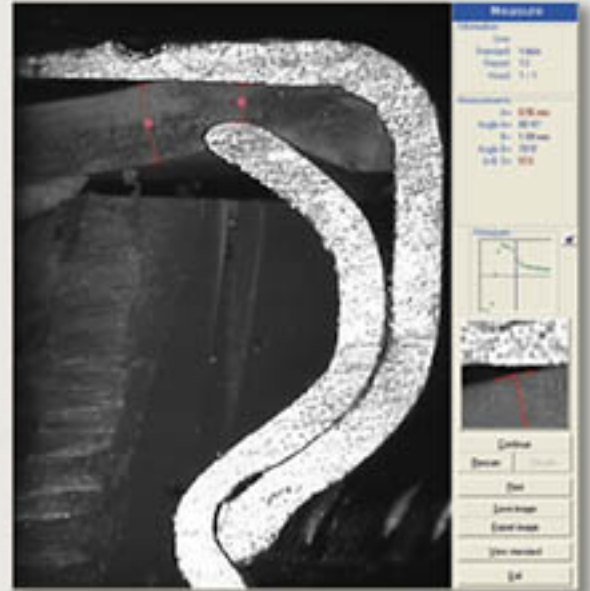


Quality By Vision Ltd.

CapSee 9000



Laser light profiles the outside of the capsule for measuring the diameter at two points.



White light shows the sealing closure for measuring the compression ratio.



- Automatic, safe and easy!
- Highly repeatable and accurate!
- Ensures the closure of the aerosol capsules!
- Fully multilingual, works under Windows™!
- Especially designed solution for medicinal aerosol capsules!

Ensure the closure of medicinal aluminum aerosol capsules!

CapSee 9000

Introduction

CapSee is a new computerized system for ensuring the sealed closure of aluminum aerosol capsules. Sprays, such as for Asthma or SARS, utilize a unique sealing mechanism. An off-line sample of the capsules is required periodically, in order to verify that the closure is sealed.

How does it work?

The CapSee system is comprised of a saw, optical unit and software. A set of capsules, one per line, are collected by the operator. First, they are measured externally using the laser. Using the special saw, the operator cuts the capsule to remove the complete section and expose the sealing closure.

The optical unit utilizes high-resolution optics and provides a unique view of the closure. The software automatically analyzes the laser profile and places the measurement lines in the correct positions. This allows the system to analyze the closure's compliance with the preset standards.

The system provides two types of measurements:

- Laser transmissive light to measure the external diameter.
- White reflective light for measuring the inside compression.

Lights are automatically activated as needed. The focus plane is adjusted manually.

The image shows a screenshot of a 'CapSee 9000 Measurement report'. It contains a header with 'CapSee 9000 Measurement report', a table with columns for 'Line', 'Date', 'Time', 'Operator', 'Machine', 'Status', 'Diameter', 'Compression', and 'Pass/Fail'. Below the table is a line graph showing the diameter and compression measurements for each line.

CapSee Report

At the end of the measurement cycle, the system provides a report, which can be later used as proof for the quality of the closure. The system maintains a database of previous reports and allows retrieval of archived old reports. The operator can also save images for future reference, along with the measurement values and line positions.

System specifications

Resolution: 10 microns
GR&R: 15% or better!
Optics: Dual HR CCD sensors
Focus planes: Two
Focus adjustment: Manual switch
Calibration gauge: Certified for ISO 9000

Light source: Laser- transmissive
White- Reflective
Light source control: Software
Diameters: Two preset diameters
Diameter selection: Housing replacement

Saw specifications

Design: Specifically for aluminum aerosol capsules!
Blade: 100x22x0.6 mm 160 teeth
Speed: 600 RPM
Cutting axis: 2 (x and y axis)

Power source: 110V or 220V
Mechanism: Custom clamping & rotating mechanism
Surplus material: Expelled via special drawer

Quality By Vision Ltd.



POB 616, Yokneam Elite 20692, Israel

Fax: +972-4-9591059

Phone: +972-4-9591147

qbyv@qbyv.com
www.qbyv.com

All trademarks and copyrights are reserved by their respective companies