

## Quality By Vision Ltd.

P.O.B 616, Yokneam Elite 20692, Israel

Tel: + (972) 4-959-1147

Fax: + (972) 4-959-1059

Email: [qbyv@qbyv.com](mailto:qbyv@qbyv.com)

Web: <http://www.qbyv.com>

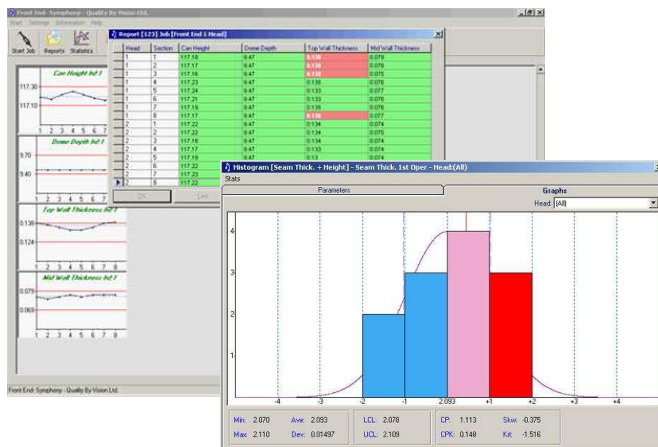
# Front End Gauge Fact Sheet

The Front End Gauge is Quality By Vision's heavy-duty automated system designed to accurately measure aluminum or steel beverage cans before the necking process.

Quality By Vision is the industry leader in the development and deployment of precision Metrology for the Food and Beverage canning industries.

Until today, off-line Front End Gauges required operators to move the can between different measurement stations, each sampling a different parameter.

The reliance on operator intervention produces a lower GR&R rating and a time-consuming measurement process. Especially if cans from multiple body makers are involved.



Quality By Vision's objective in developing the gauge was to dramatically improve repeatability **and** shorten the measurement process. This is achieved by sampling all four parameters of the can – Height, Dome depth and Material Thickness at two different points on the can's profile – at once and automatically rotating the can to cover as many sections as required.

This computer-integrated system is significantly lower in price than any other system and is built to measure reliably and accurately even when it's right on the factory floor. The Front End Gauge is less expensive and simpler to maintain because it relies on a standard Windows™ based computer and does not require an expensive laboratory environment or trained operators.

The system is provided with the simple yet powerful *Symphony* Statistical Process Control (SPC) suite, for free! In addition, the software can export the measurement data and statistics to a central database for further analysis by production or quality assurance managers or to the plant's SPC system.

Quality By Vision has created an accurate, repeatable and affordable Front End Gauge that's perfect for every budget!

## Comparative Guide

Parameter	Quality By Vision	The Competition
<b>Durability</b>	<b>Closed measurement chamber</b> <b>Heavy-Duty design for factory floor work</b>	Exposed measurement area  Requires laboratory environment
<b>Speed</b>	<b>12 seconds for 8 samples</b>	Considerably longer, depends on operator experience
<b>Automation</b>	<b>Automatic PLC-based system</b> <b>No user intervention in measurement process</b>	Manual placement of can
<b>SPC</b>	<b>Free <i>Symphony</i> Statistical Process Control (SPC) suite</b>	-
<b>Price</b>	<b>Significantly lower</b>	-

**Quality By Vision Ltd.**

**We know quality when we see it!**